

DETROIT TUDOR east english village redo // BRUNCH BUNCH a clarkston tradition

Detroit Home

HOW WE LIVE, WHERE WE LIVE

December 2017 - January 2018

INSIDE
OUTSIDE

RIGHT AT HOME FOR THE HOLIDAYS
PLUS A NEW 'MID-CENTURY' BEAUTY

Serving up Style

Invite pretty and practical to the table when creating intimate dining spaces

By Tanya Zager Chisholm

WHO: Friends Laura Zender, in photo on right, and Tiffany Edison, left, collaborated on a project at the Michigan Design Center (MDC) in Troy. Zender, of Laura Zender Design, is an allied member of the American Society of Interior Designers and has degrees in interior design from Chicago's Harrington Institute of Interior Design and the University of Michigan. Specializing in residential design since 2005, she has firms in Chicago and Ann Arbor. Edison, of Persnickety Interior Design, graduated from Michigan State University with a degree in psychology, and also studied interior design. She was the proprietor/resident interior designer at Persnickety, a home accents retail store in Adrian, for nearly 10 years before moving to Ann Arbor three years ago.

DESIGNERS' GOALS: The women were asked by Schumacher to design a vignette for the 2017 Celebrations Around the World event, commemorating the 40th anniversary of the MDC. Inspired by a jazz-themed painting, the duo was drawn to its rich hues and French and Creole influences. "We wanted to portray what one might find in an upscale blues club in New Orleans," Zender says. "Our spaces always incorporate treasures and art collected along the way, warm textures and color, and a mix of vintage and new items."

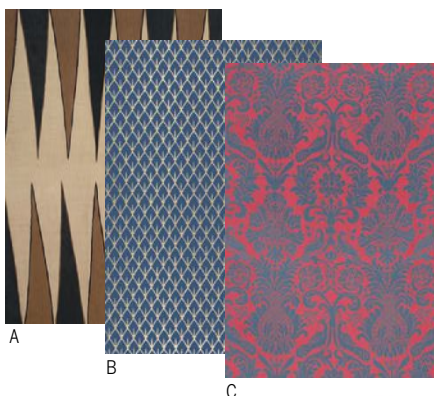
INFO: Tiffany Edison, 517-902-8705; Laura Zender, 734-369-8251, laurazenderdesign.com

Designing for Dining: Tips from Tiffany Edison

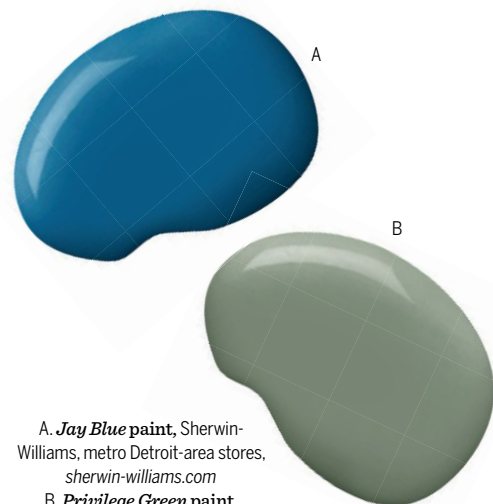
- Switch it up. A silver champagne bucket is a fun stand-in for a vase.
- Be sure those with different personalities/backgrounds sit next to each other. It will make the conversation more interesting.
- Consider the scale of the space. We used art to fill a space.
- Make things personal and intimate with special touches, such as a monogram.



"AVOID BEING MATCHY-MATCHY IN PAINT COLORS, PATTERNS, OR STYLE. MIX IT UP!"
— LAURA ZENDER



- A. **Moorea in Lava black**, price upon request, Schumacher, Michigan Design Center, Troy
- B. **Mughal Leaf in Imperial**, price upon request, Schumacher, Michigan Design Center, Troy
- C. **Anna Damask in rouge/Prussian blue**, price upon request, Schumacher, Michigan Design Center, Troy



- A. **Jay Blue paint**, Sherwin-Williams, metro Detroit-area stores, sherwin-williams.com
- B. **Privilege Green paint**, Sherwin-Williams, metro Detroit-area stores, sherwin-williams.com



Galerie cocktail table in antique brass, price upon request, Schumacher, Michigan Design Center, Troy